

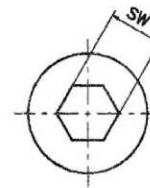
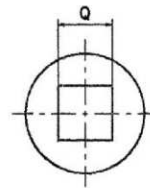
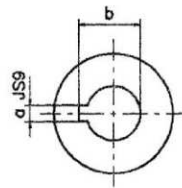
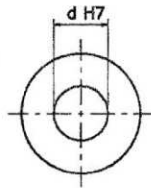
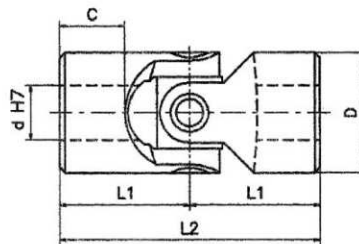


# GIUNTI SINGOLI ALTA VELOCITA' CON CUSCINETTI A RULLINI

HIGH SPEED SINGLE JOINTS WITH NEEDLE ROLLER BEARINGS

serie «H»  
series (DIN 808)

- Cuscinetti a rullini lubrificati a vita. Nessuna manutenzione  
*Roller bearings lubricated for life. No maintenance required.*
- Precisi e versatili, silenziosi e scorrevoli;  
Vasto campo di applicazione.  
*Precise and versatile, silent and smooth running;  
wide application field.*
- Angolo max 45°. Giri max. 4000/min.  
*Max angle 45°. Max speed 4000 R.P.M.*
- "H" corrispondenti DIN 808 - "HB" corrispondenti DIN 808/7551  
*"H" to DIN 808 - "HB" to DIN 808/7551*
- Esecuzioni speciali a richiesta.  
*Special execution on request.*



Mod. Type	Codice / Code	d	D	L2	L1	C	Codice / Code	Codice / Code	a	b	Codice / Code	Q	* SW	Peso Weight Kg
<b>03H</b>	SHOS 1000	10	22	48	24	12	SHOS 101C	SHOS 102C	3	11,4	SHOS 102Q	10	10	0,10
<b>04H</b>	SHOS 1200	12	25	56	28	13	SHOS 121C	SHOS 122C	4	13,8	SHOS 122Q	12	12	0,16
<b>05H</b>	SHOS 1400	14	28	60	30	14	SHOS 141C	SHOS 142C	5	16,3	SHOS 142Q	14	14	0,20
<b>1H</b>	SHOS 1600	16	32	68	34	16	SHOS 161C	SHOS 162C	5	18,3	SHOS 162Q	16	16	0,30
<b>2H</b>	SHOS 1800	18	36	74	37	17	SHOS 181C	SHOS 182C	6	20,8	SHOS 182Q	18	18	0,45
<b>3H</b>	SHOS 2000	20	42	82	41	18	SHOS 201C	SHOS 202C	6	22,8	SHOS 202Q	20	20	0,60
<b>4H</b>	SHOS 2200	22	45	95	47,5	22	SHOS 221C	SHOS 222C	6	24,8	SHOS 222Q	22	22	0,95
<b>5H</b>	SHOS 2500	25	50	108	54	26	SHOS 251C	SHOS 252C	8	28,3	SHOS 252Q	25	25	1,20
<b>6H</b>	SHOS 3000	30	58	122	61	29	SHOS 301C	SHOS 302C	8	33,3	SHOS 302Q	30	30	1,85
<b>6H1</b>	SHOS 3200	32	58	130	65	33	SHOS 321C	SHOS 322C	10	35,3	SHOS 322Q	30	30	2,00
<b>7H</b>	SHOS 3500	35	70	140	70	35	SHOS 351C	SHOS 352C	10	38,3	—	**	**	3,15
<b>8H</b>	SHOS 4000	40	80	160	80	39	SHOS 401C	SHOS 402C	12	43,3	—	**	**	4,60
<b>9H</b>	SHOS 5000	50	95	190	95	46	SHOS 501C	SHOS 502C	14	53,8	—	**	**	7,60
<b>04HB</b>	SHBS 1200	12	22	62	31	18	SHBS 121C	SHBS 122C	4	13,8	SHBS 102Q	10	10	0,12
<b>1HB</b>	SHBS 1600	16	25	74	37	21	SHBS 161C	SHBS 162C	5	18,3	SHBS 122Q	12	12	0,20
<b>3HB</b>	SHBS 2000	20	32	86	43	24	SHBS 201C	SHBS 202C	6	22,8	SHBS 162Q	16	16	0,35
<b>5HB</b>	SHBS 2500	25	42	108	54	31	SHBS 251C	SHBS 252C	8	28,3	SHBS 202Q	20	20	0,80
<b>6HB</b>	SHBS 3000	30	50	132	66	38	SHBS 301C	SHBS 302C	8	33,3	SHBS 252Q	25	25	1,20
<b>8HB</b>	SHBS 4000	40	70	166	83	47	SHBS 401C	SHBS 402C	12	43,3	—	**	**	2,90