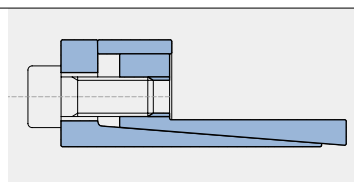


# Locking assemblies

## TLK110

Pag. 6

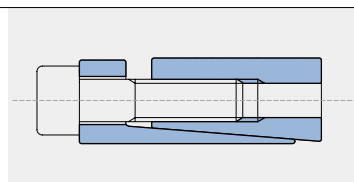
Self-centering  
Medium-high torque  
Available from 6 mm to 130 mm diameter  
Restricted radial encumbrance



## TLK130

Pag. 8

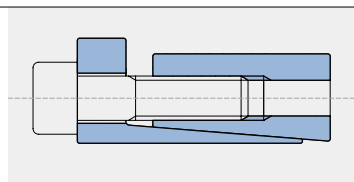
Self-centering  
High torque  
Available from 20 mm to 180 mm diameter  
Quick installation time



## TLK131

Pag. 8

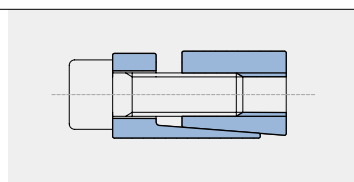
Self-centering  
Medium torque  
Available from 20 mm to 180 mm diameter  
Low surface pressures



## TLK132/139

Pag. 10 / Pag. 13

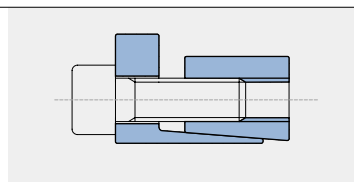
Self-centering  
Medium-high torque  
TLK 132: Available from 20 mm to 200 mm diameter  
TLK 139: Available from 18 mm to 90 mm diameter



## TLK133/134

Pag. 10 / Pag. 12

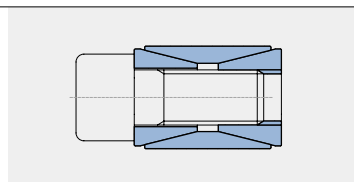
Self-centering  
Medium torque  
TLK 133: Available from 20 mm to 200 mm diameter  
TLK 134: Available from 14 mm to 50 mm diameter



## TLK200

Pag. 14

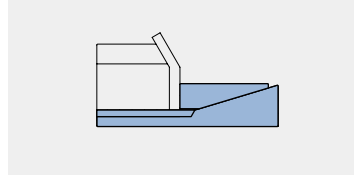
Not self-centering  
Medium torque  
Available from 20 mm to 900 mm diameter  
Self dismantling



## TLK250/250L

Pag. 16

Low torque  
Available from 14 mm to 70 mm diameter  
TLK 250: not self-centering  
TLK 250L: self-centering

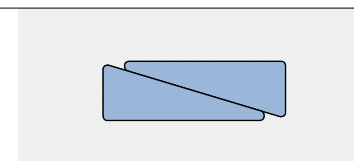


# Locking assemblies

## TLK300

Pag. 18

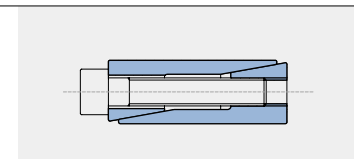
Not self-centering  
Low torque  
Available from 6 mm to 600 mm diameter  
Restricted radial encumbrance



## TLK350

Pag. 20

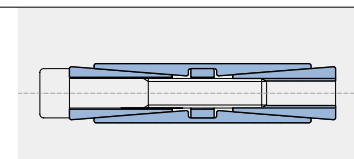
Self-centering  
Medium-high torque  
Available from 6 mm to 50 mm diameter  
Restricted radial encumbrance



## TLK400/401

Pag. 21

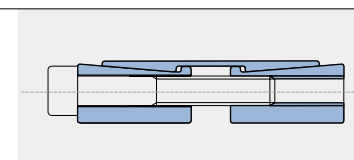
Self-centering  
Very high torque  
Available from 45 mm to 400 mm diameter  
Even pressures distribution



## TLK450/451

Pag. 24

Self-centering  
Very high torque  
Available from 25 mm to 600 mm diameter  
Application economically advantageous

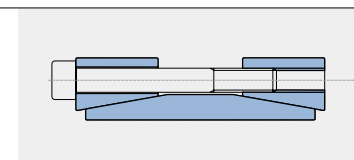


# Shrink discs

## TLK500

Pag. 27

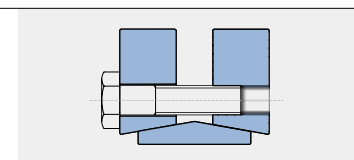
Rigid coupling  
Medium torque  
Available from 17 mm to 80 mm diameter  
Quick installation and dismantling



## TLK601/602/603

Pag. 28

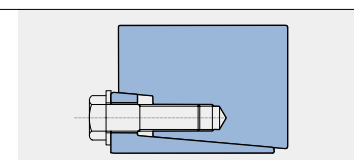
Self-centering  
High / very high torque  
Available from 14 mm to 480 mm diameter  
Quick installation time



## TLK622/623/681/683

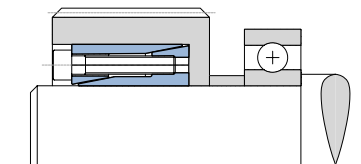
Pag. 34

Self-centering  
High / very high torque  
Available from 12 mm to 620 mm diameter  
Quick installation time



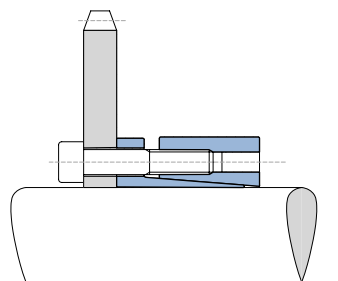
## Locking assemblies

### Application examples



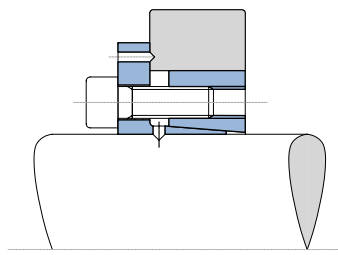
**EA01**

Bearing axial fastening and gear locking by means of model TLK 350



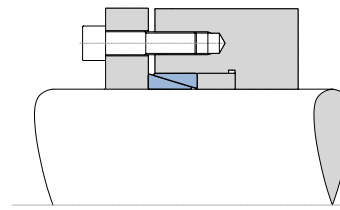
**EA02**

Chain sprocket locking by means of model TLK 130 with no split outside ring



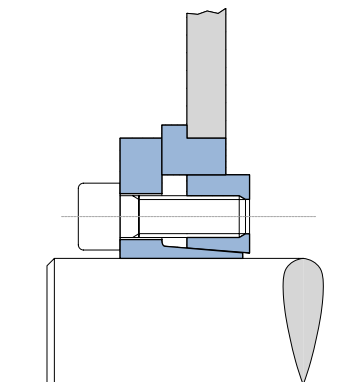
**EA07**

Cam locking by means of special model TLK 133



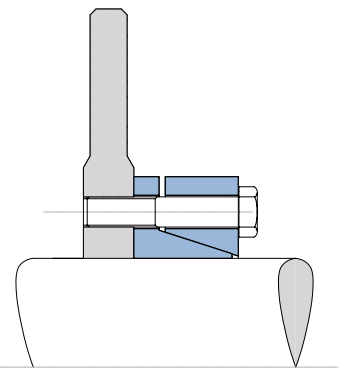
**EA08**

Use of model TLK 300 without spacer



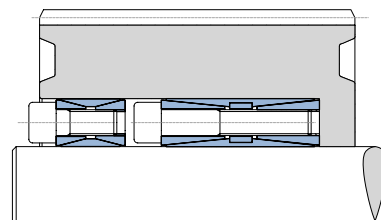
**EA03**

Thin plate locking by means of model TLK 133 with adapter ring



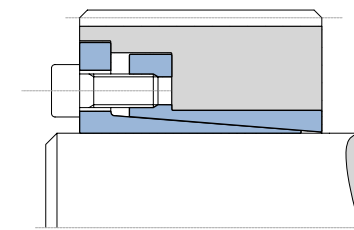
**EA04**

Break disc locking by means of special model TLK 700



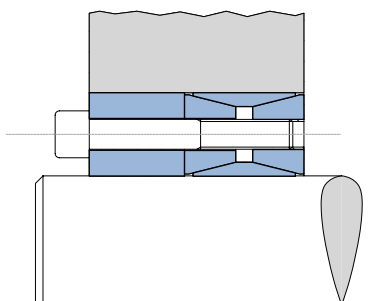
**EA09**

Use of several locking assemblies in presence of very heavy torque



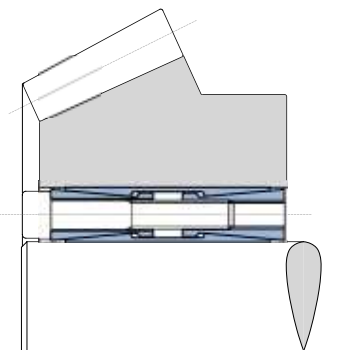
**EA10**

Use of model TLK 110 in presence of high rpm



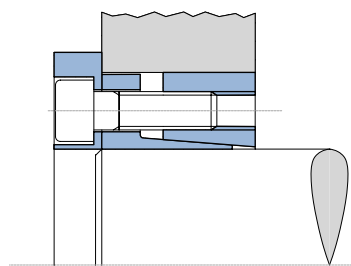
**EA05**

Hub locking by means of model TLK 200 with a special centering ring



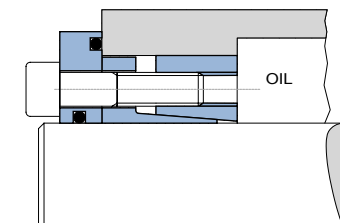
**EA06**

Large hub locking by means of special version of model TLK 400



**EA11**

Special version of model TLK 132 with screws protection ring



**EA12**

Special version of model TLK 132 with retaining ring